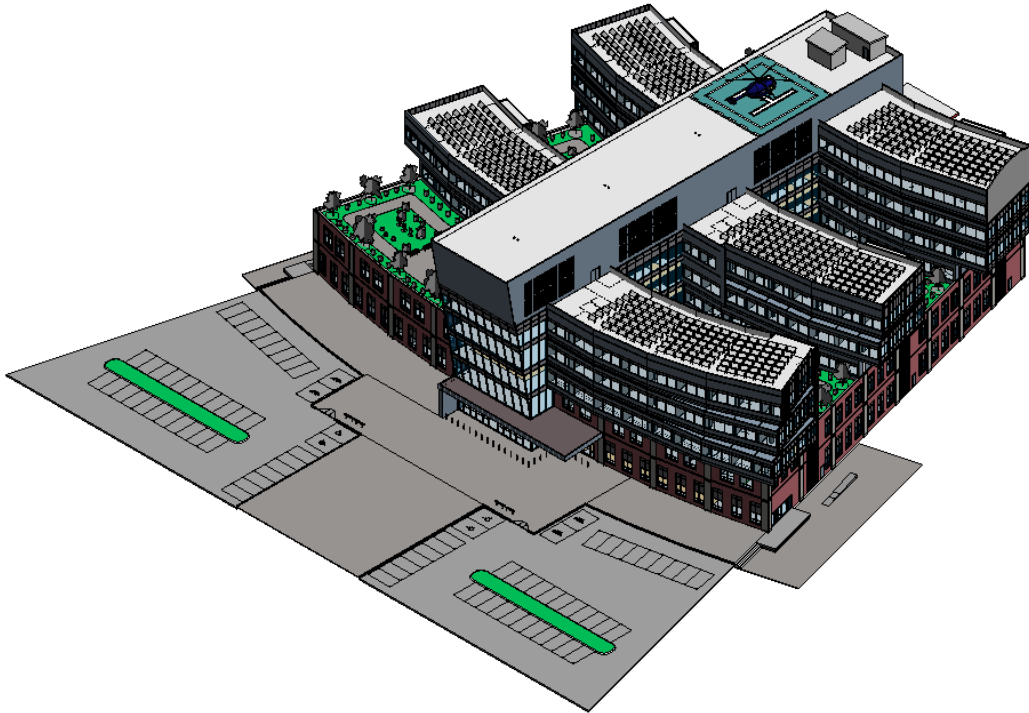


Guidance on how to use sample models for beta testing

This document provides guidance on which chapters from the **Code on Accessibility in the Built Environment 2025** can be tested using the six provided sample models.

Hospital Model

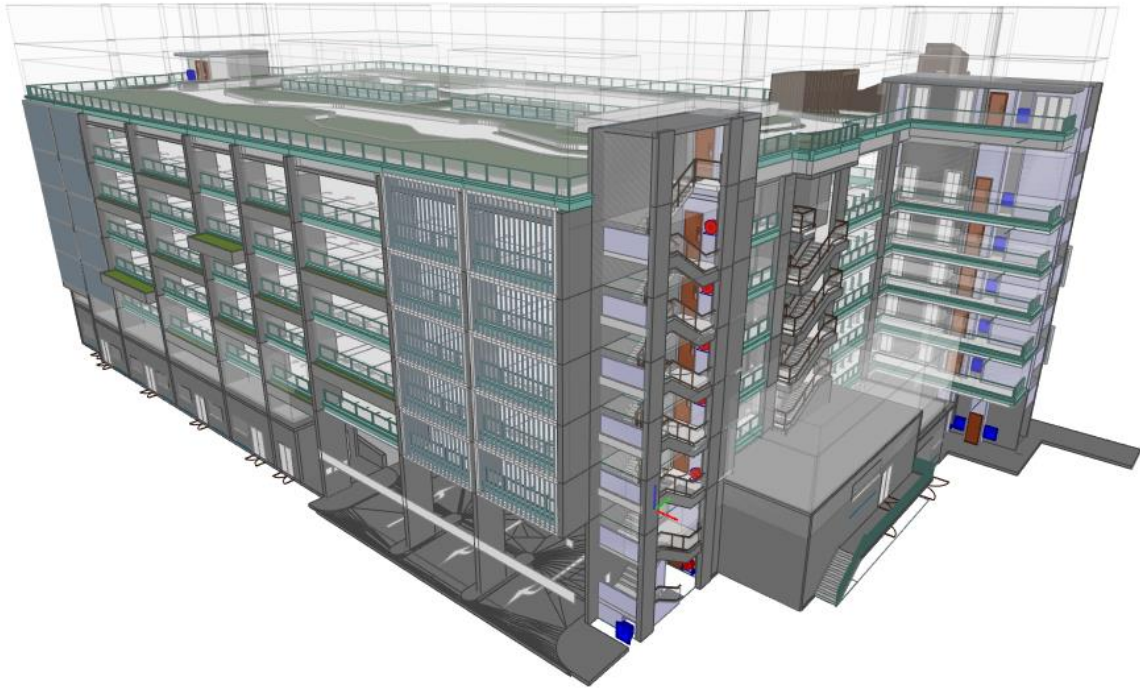


This is a sample model of a **Hospital**, a complex building type with extensive requirements for accessibility, including accessible routes, lifts, parking, and specific sanitary facilities.

You can use this model to run checks on:

- **Chapter 2:** Provisions for Accessibility
- **Chapter 3:** Arriving at the Building (Parking)
- **Chapter 4:** Accessibility Around and Within the Building (Horizontal and Vertical Circulation)
- **Chapter 6:** Family-friendly Provisions

Car Park Model

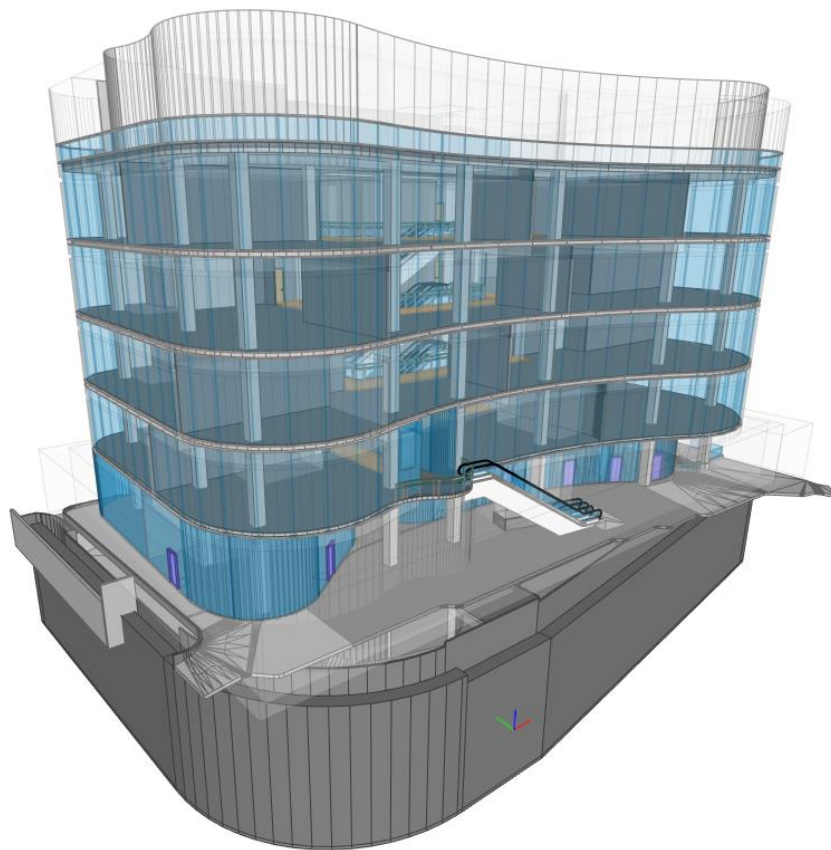


This is a sample model of a **Car Park**. This model is specifically designed for testing requirements concerning vehicle parking and the connected accessible routes to a building entrance or lift lobby.

You can use this model to run checks on:

- **Chapter 2:** Provisions for Accessibility
- **Chapter 3:** Arriving at the Building (Parking)
- **Chapter 4:** Accessibility Around and Within the Building (Horizontal and Vertical Circulation)
- **Chapter 6:** Family-friendly Provisions

Mall Model

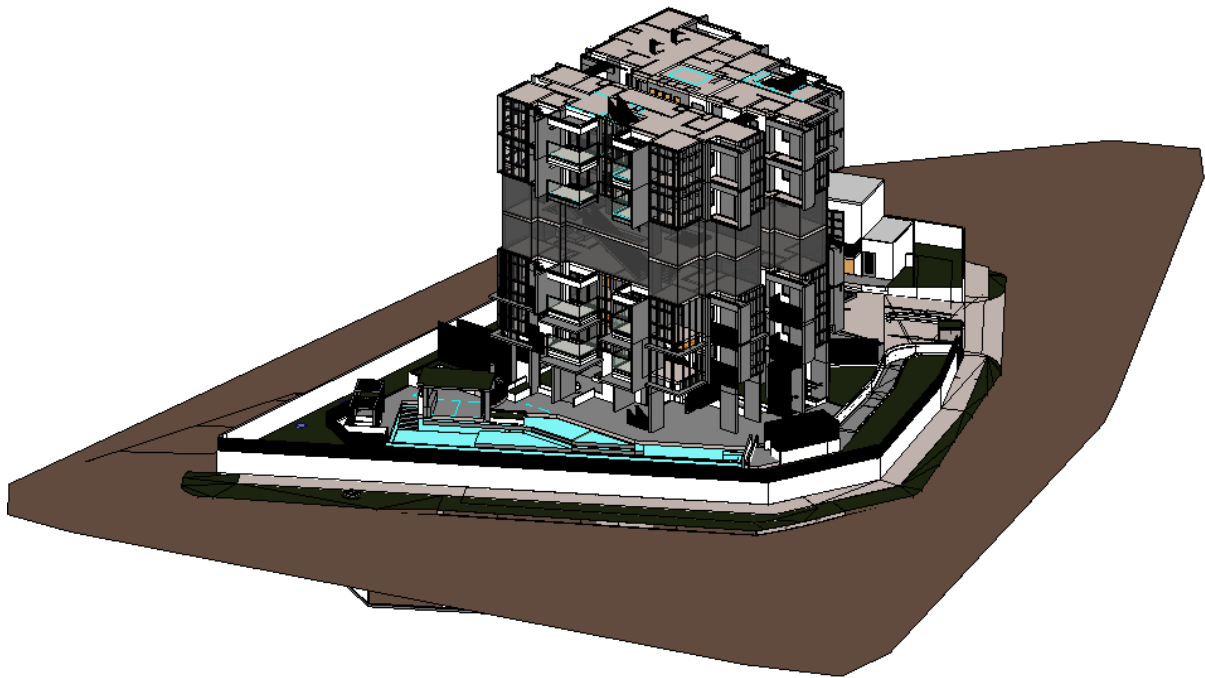


This is a sample model of a **Mall** (Shopping Centre or Multi-purpose complex), which requires accessible provisions across all levels, including accessible vertical circulation (lifts/ramps/stairs) and sanitary facilities.

You can use this model to run checks on:

- **Chapter 2:** Provisions for Accessibility
- **Chapter 4:** Accessibility Around and Within the Building (Horizontal and Vertical Circulation)
- **Chapter 5:** Sanitary Provisions

Condo Model

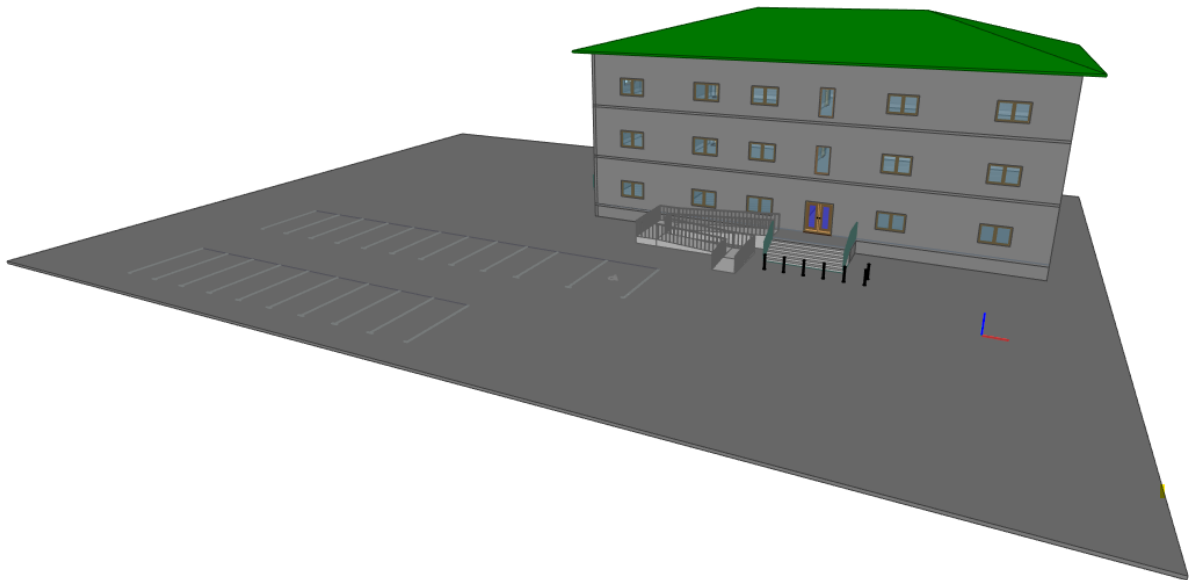


This is a sample model of a **Condominium** (Residential Development). It is best used for testing general accessibility requirements as well as the unique requirements for accessible dwelling units, specifically covered in Chapter 7.

You can use this model to run checks on:

- **Chapter 2:** Provisions for Accessibility
- **Chapter 3:** Arriving at the Building (Parking)
- **Chapter 4:** Accessibility Around and Within the Building (Horizontal and Vertical Circulation)
- **Chapter 6:** Family-friendly Provisions
- **Chapter 7:** Residential, Serviced Apartments, Hotels, Hostels and Dormitories

School Model (Training)



This is a sample model of a **School** designed for training purposes. This model is comprehensive and allows for testing a broad set of provisions, including site access, parking, internal circulation, and sanitary facilities.

You can use this model to run checks on:

- **Chapter 2:** Provisions for Accessibility
- **Chapter 3:** Arriving at the Building (Parking)
- **Chapter 4:** Accessibility Around and Within the Building (Horizontal and Vertical Circulation)
- **Chapter 5:** Sanitary Provisions
- **Chapter 6:** Family-friendly Provisions

School Building



This is a sample model of a **School Building**. This model is suited for testing general accessibility within the main structure, focusing on movement between levels (ramps, stairs, lifts) and accessible sanitary facilities.

You can use this model to run checks on:

- **Chapter 2:** Provisions for Accessibility
- **Chapter 4:** Accessibility Around and Within the Building (Horizontal and Vertical Circulation)
- **Chapter 5:** Sanitary Provisions